

TRACTION POWER SUPPLY DISPATCHER SYSTEM



Traction Power Supply Dispatcher System for the electrification and railway automation provides real-time monitor and control of the controlled objects in the Traction Power Supply Substations, Base Sectional Posts, Neutral sections and Railway stations.

The system as a multi-functional dispatcher system is able to monitor and control other sub-systems like point switch de-icing and platform lighting sub-systems. The system enables rapid, flexible and safe operation and control under normal and abnormal conditions.

Main Features

- IEC 61850 & IEC 60870-5-104 data communication protocols
- Multi-protocol ProField IED & Prolan ZEUS SCADA software
- Turnkey Prolan made Traction Power Supply Dispatcher System
- High quality & reliability, world-wide references

System integration

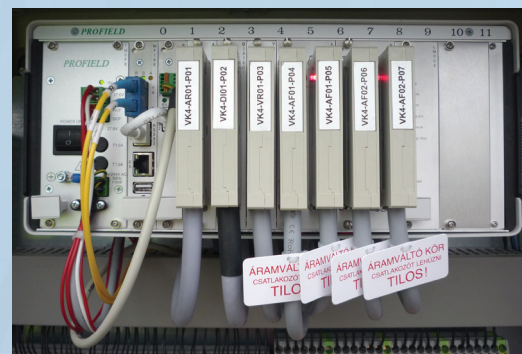
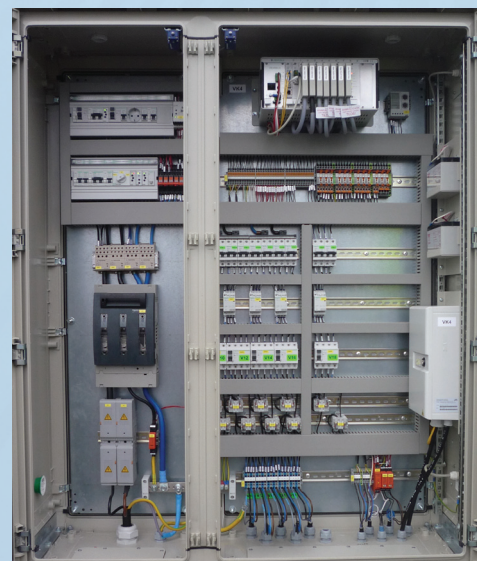
- Easy integration to other systems
- Data provision for upper level dispatcher centres (i.e. DNO dispatcher centre)
- Multi-protocol data acquisition (i.e. Protection relays)



Technical Specification

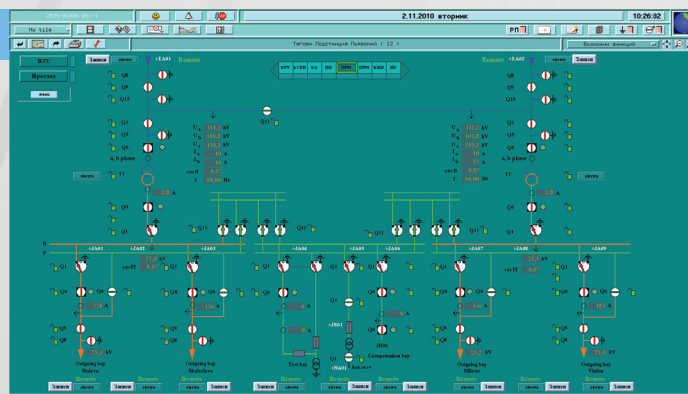
Field equipment

- Modular ProField IED with data communication interfaces
- Used media for data communication fibre-, copper-cable or GSM (3G/GPRS)
- Data communication: Serial (RS232, RS422, RS485) or Ethernet
- Power supply: 12VDC, 24VDC, 48VDC, 220VDC or 230VAC, built-in backup battery
- Interfaces for IEDs like protection relays and energy meters
- Digital and Analogue input & output modules
- Measurement modules with direct connection to technology (U, I, C°)



Dispatcher Centre

- Server-Client architecture with work stations
- High available Hot stand-by Dual server system
- Softwares: Linux OS, Prolan ZEUS SCADA application
- Able to monitor and control other sub-systems like point switch de-icing and platform lighting sub-systems
- Unlimited controlled objects
- Advanced network management functions
- voltage depend colouring, switching sequences
- Duty change, planned maintenance and fault repair process management
- Train traffic data display
- Advanced logging and trending functions
- Diagnostic functions



Prolan Process Control Co.
H-2011 Budakalász, Szentendrei út 1-3.
Hungary
Phone: +36-20/954-3100
Fax: +36-26/540-420
email: info@prolan.hu
Web: www.prolan.hu